

Roller Garage Doors For Your Home



**WOKINGHAM
GLAZING**

WINDOWS DOORS BIFOLDS



Deluxe 77

Our Deluxe 77 roller garage doors are perfect for larger garages, but can be just as easily installed on smaller openings to provide functionality and efficiency while keeping the costs affordable.

This range of doors have a maximum opening width of 16ft, and are well suited for single, large or double-sized garages. All our remote controlled Deluxe 77 roller doors come with two remotes as standard with two occupants in mind, meaning that neither user has to go without the added convenience and ease of use that remote access offers.

We create strong, durable and efficient doors with only 300mm (12 inch) square roll housing and 95mm (4 inch) guide runners the Deluxe 77 is designed to be as compact as possible to take up minimal storage space within your garage.

Our Deluxe 77 roller garage doors are available in a range of colours and with a number of optional extra features and safety functions to ensure ease of use and an attractive aesthetic.

Deluxe 77 Product Range

Specification

General

Top Box:	300mm (12 inch) Sq
Guide Runner Width:	95mm (4 inches)
Slat Height:	77mm (3 inch)
Slat Depth:	18mm (3/4 inch)

Standard 77-RC Single

Max. curtain surface area:	15 square meters
Max. opening width up to:	2745mm (9ft)
Max. opening height up to:	2285mm (7ft 5")

Standard 77-RC Large

Max. curtain surface area:	15 square meters
Max. opening width up to:	3660mm (12ft)
Max. opening height up to:	2285mm (7ft 5")

Standard 77-RC Double

Max. curtain surface area:	15 square meters
Max. opening width up to:	4880mm (16ft)
Max. opening height up to:	2285mm (7ft 5")



Description

The Deluxe 77 remote control roller garage door is available in a choice of 14 painted curtain colours & 3 laminate wood effects, it comes with an internal manual override & 2 handsets as standard, as well as having a fully enclosed 300mm square top box it has 95mm wide guide runners which allows it to cover clear openings of up to 16ft (4875mm) wide.



Compact 55

Our Compact 55 roller garage doors are ideally suited to single sized openings garages. This garage door is slimline, with the box and guide runner taking up very little space within the garage. The maximum total width of an Compact 55 door is up to 8ft, including the frame, so really is built with scale in mind. This space saving model can be measured and fitted by our own team of experts.

We believe that the size of your garage shouldn't influence the quality of your garage door, so our Compact 55 roller doors are constructed to consistently high standards and offer smooth, easy operation and a strong, robust door that is guaranteed to last for years to come.

Our range of Compact 55 roller doors come with two remote control handsets as standard, with additional handsets available if needed. We use robust and durable aluminium to manufacture our doors, which are available in a range of colours.

Compact 55 Product Range

Specification

General

Top Box:	205mm (8 inch) Sq
Guide Runner Width:	65mm (2 1/2 inches)
Slat Height:	55mm (2 inch)
Slat Depth:	8mm (1/4 inch)

Compact 55-RC Compact

Max. curtain surface area:	7 square meters
Max. opening width up to:	2310mm (7ft 7")
Max. opening height up to:	2285mm (7ft 5")



Description

The Compact 55 remote control roller garage door is available in a choice of 13 painted curtain colours, it comes with an internal manual override & 2 handsets as standard, as well as a fully enclosed 205mm square top box it has 65mm wide guide runners making it ideal for garages with limited room or on a budget.



Colour Options

We understand that alongside excellent quality, style and aesthetic appeal is a very important feature for any roller garage door.

Your garage door makes up a huge portion of the front of your house, meaning that it is normally the first thing that passers-by will notice about the appearance of your property.

With colour playing such a huge part in the kerb appeal of your home, we're committed to providing 14 beautiful shades and 3 laminate designs, as well as a bespoke RAL colour matched service available.



RAL colour options available



Green



Anthracite



Chartwell Green



Cream



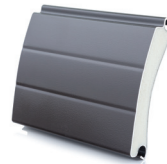
White



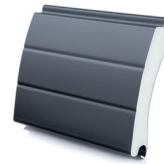
Red



Blue



Brown



Black



Ivory



Beige



*Painted Irish Oak



Painted Golden Oak



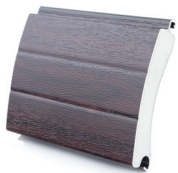
Painted Rosewood



*Irish Oak Laminate



*Golden Oak Laminate



*Rosewood Laminate

Free Colour Samples

These are photographic representations of our colours and although we have matched them as close as possible there is nothing like the real thing so we offer free colour samples that can be delivered to you, if you are interested in a sample then please let us know what colour and we will get this arranged for you.

*Please be aware that all colours can vary slightly due to batch variations.

*These options are only available in the Deluxe 77 range

What Makes A Roller Door

Learn a little bit more about what goes into a roller door.

Slats

Made from double-skinned aluminium, our roller door slats come with a foam-filled insert for effective insulation, and are made to measure to ensure a perfect fit.

RD55 slat sizes: 55mm high, 8.2mm thick

RD77 slat sizes: 77mm high, 18mm thick



Benefits Of Double-Skinned Aluminium Slats

- Improved insulation
- Strong physical barrier
- Effective deterrent for break-ins
- Reduces sound pollution
- Quiet, smooth function
- Protection against volatile weather
- Increased protection from UV and infrared rays

All parts of a roller garage door are made from powder-coated or painted aluminium with rubber seals on the base rail for extra protection.

Roll Housing

All of our roller doors are fully enclosed in a roll housing that is designed to be fitted either above or below the lintel of your garage, depending on your preference. We supply a fully enclosed roll housing because it is part of the machinery directive to stop entrapment, and ensures the longer lasting life of the internal mechanism. The enclosed roll housing is constructed out of strong and durable aluminium and can help protect your garage door from any accidental damage that can affect the functionality of your door.

Our roll housing and guide runners come as standard in white, but we do offer a colour match facility where possible as an optional extra.

Benefits Of A Roll Housing:

- Provides a fascia for the door
- Provides the curtain with weather protection all round
- Protects the components of the door from dust or debris that can jam mechanisms
- Creates a very neat appearance
- Reduces operating noise
- Increases the insulation and draught-proofing qualities of the door
- Reduces the risk of fingers, ties, hair etc. being caught up in the mechanisms

Compact 55 Guide Runner

The guide runner for Compact 55 roller garage doors is constructed from powder coated aluminium and has a double brush feature. This guide runner has the measurements of 65mm width and 27mm depth.

Deluxe 77 Guide Runner

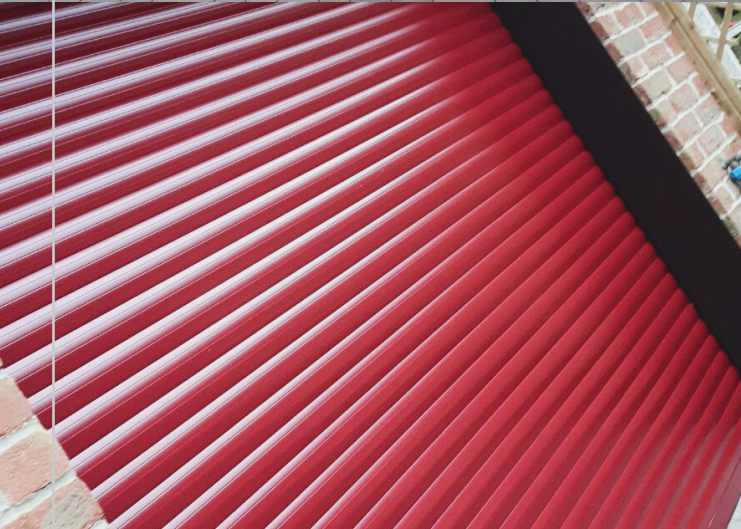
The guide runner for Deuxe 77 roller garage doors is powder coated extruded aluminium with a double brush design and is available in the standard size of 95mm width and 34mm depth.

Compact 55 Base Rail

The last slat of the Compact 55 base rail is an extruded aluminium slat, powder coated to match the curtain colour. The slat is hollow, 49mm high and 8.2mm thick; there is a small rubber insert at the bottom to cushion the door, with the rubber seal being 6mm wide and 6mm high.

Deluxe 77 Base Rail

The Deluxe 77 roller garage door has a base rail of powder coated extruded aluminium, made to match the colour of the door's curtain. The slat is hollow, 78mm high and 18mm thick with a rubber seal 15mm in width and 15mm high.



Optional Extras

We have a range of optional extras that you can use with our roller doors to make your garage door even more practical and easy to operate. All of our additional components can be added to your order and installed by our team on-site to ensure they meet up with our exacting standards, giving you a full demonstration on their functionality while they are there.

External Manual Override

Although our doors come with internal manual override as standard we offer a external manual override system that can be installed into most garages to allow the door to be operated from both inside and outside of the garage. This is a very important feature for any person who doesn't have an additional entrance to their garage to allow entry, preventing you from becoming locked out of your garage, whether due to misplaced keys or in the event of a power failure, preventing the need for a costly emergency call-out.



Control Systems

We stock a high quality remote control system for use with all of our ranges of roller doors, as standard our doors come with hold to run closing operation, running 230V tube motors and supplied with two transmitter handsets.

We are proud to be associated with Somfy, one of the leading manufacturers of Electronic system and as such why not upgrade your door with a wireless safety edge device which when installed on your door will mean a sensor will monitor the door when closing for the safety of you and your family. The control panel is fitted with close, open and stop buttons for operation within the garage and a courtesy light that activates when the door is in operation.

Control Box 1



Control Box 2



Control Box 3



Wireless Features

We stock a compatible range of wireless options which can be added to a garage door that is fitted with a wireless edge, such as wireless push buttons, wireless keypads, additional handsets and home automation kits.



Somfy Wireless Keypad



Somfy Wireless Push Button

Hardwired Extras

We have a range of hardwired extras that are compatible with any of our roller doors and can be installed on the inside or outside of a garage to allow you to operate the door without the use of a handset. We have two switches in stock; a rocker switch and a key switch.



Handset (Somfy)



Handset (Control Box 1)



Handset (Control Box 2)



Keyswitch